

**Figure 16 Typical Rebar Reinforcement of Foundation**



**Figure 17 Typical Finished Foundation**



**Figure 18 Typical Tower**



**Photo shows tower base, nacelle, rotor with blades assembled and crane base.**

**Figure 19 Typical Tower Section Delivery**



**Figure 20 Typical Tower Lifting Operation**



Photo shows the base section of the tower being lifted in place over the top of the control cabinat.

Figure 21 Typical Laydown At The Turbine Location



**Figure 22 Typical Collection Trench and Power Calbe System**



**Figure 23 Typical Collection Substation**

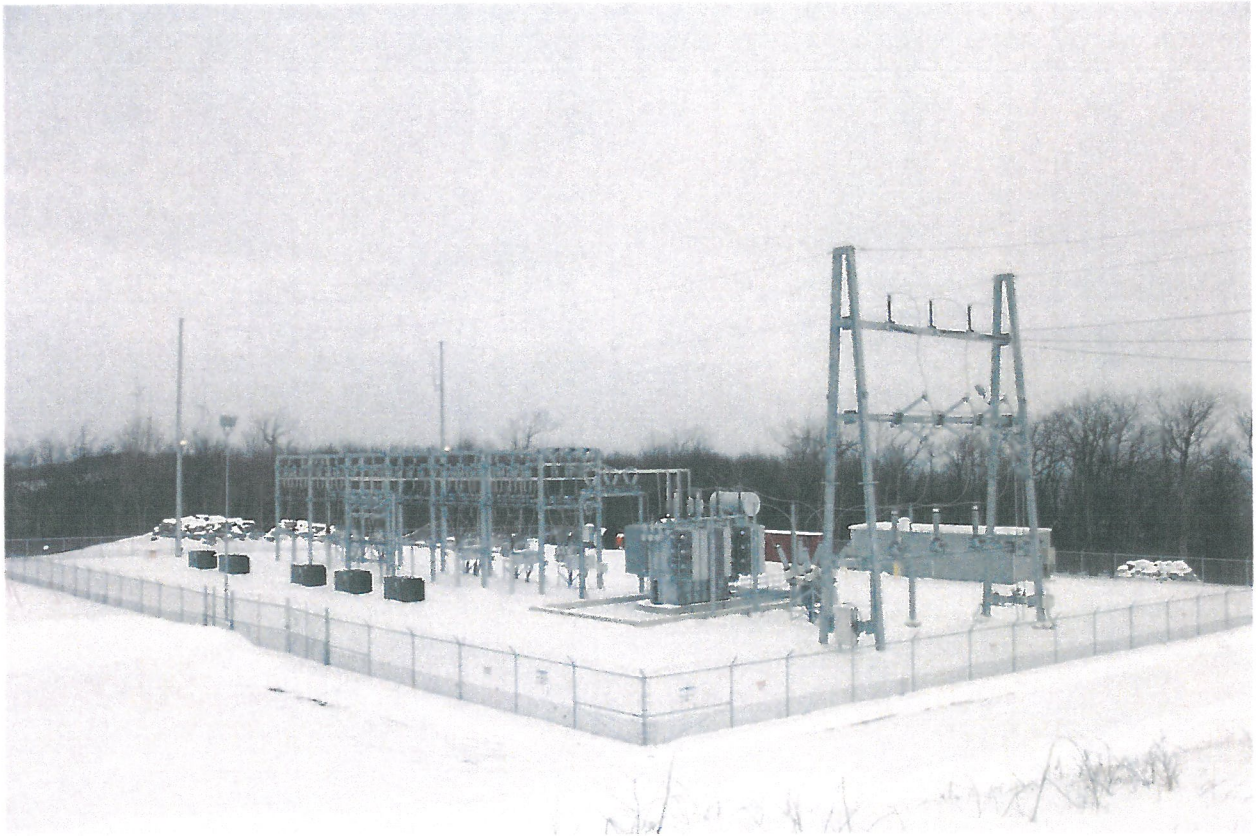
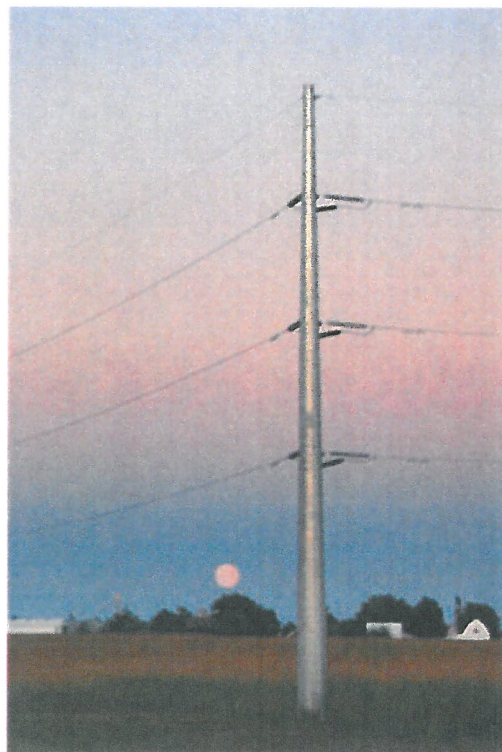
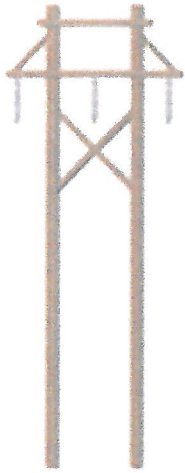


Figure 24 Typical 230 kV Power Line Structures.



## **Section 21**

### **List of Attachments**

Attachments are bound in Binders 2 and 3 of the Plan of Development. Because of its size, Attachment 5, Storm Water Pollution Prevention Plan is in a separate binder (Binder #3). The following is a list of Attachments to the Plan of Development.

**Attachment 1:** Carbon County Application Forms for Mud Springs I, II, III, and IV Development Permits.

**Attachment 2:** Record of Easement and Letter Agreements

**Attachment 3:** Certificate of Liability Insurance

**Attachment 4:** Flood Plain Impact Report

**Attachment 5:** Storm Water Pollution Prevention Plan

**Attachment 6:** Traffic Management Plan

**Attachment 7:** Highway 310 Traffic Impacts

**Attachment 8:** Noxious Weed Management Plan

**Attachment 9:** Noise Study

**Attachment 10:** Phased Schedule

**Attachment 11:** Biology Baseline Reports

**Attachment 12:** Fugitive Dust Control Plan

**Attachment 13:** Emergency Response Plan

**Attachment 14:** Emergency Management Plan

**Attachment 15:** Transmission Line Plan of Development

**Figure 25 Existing H-Frame PacifiCorp Transmission Line**

