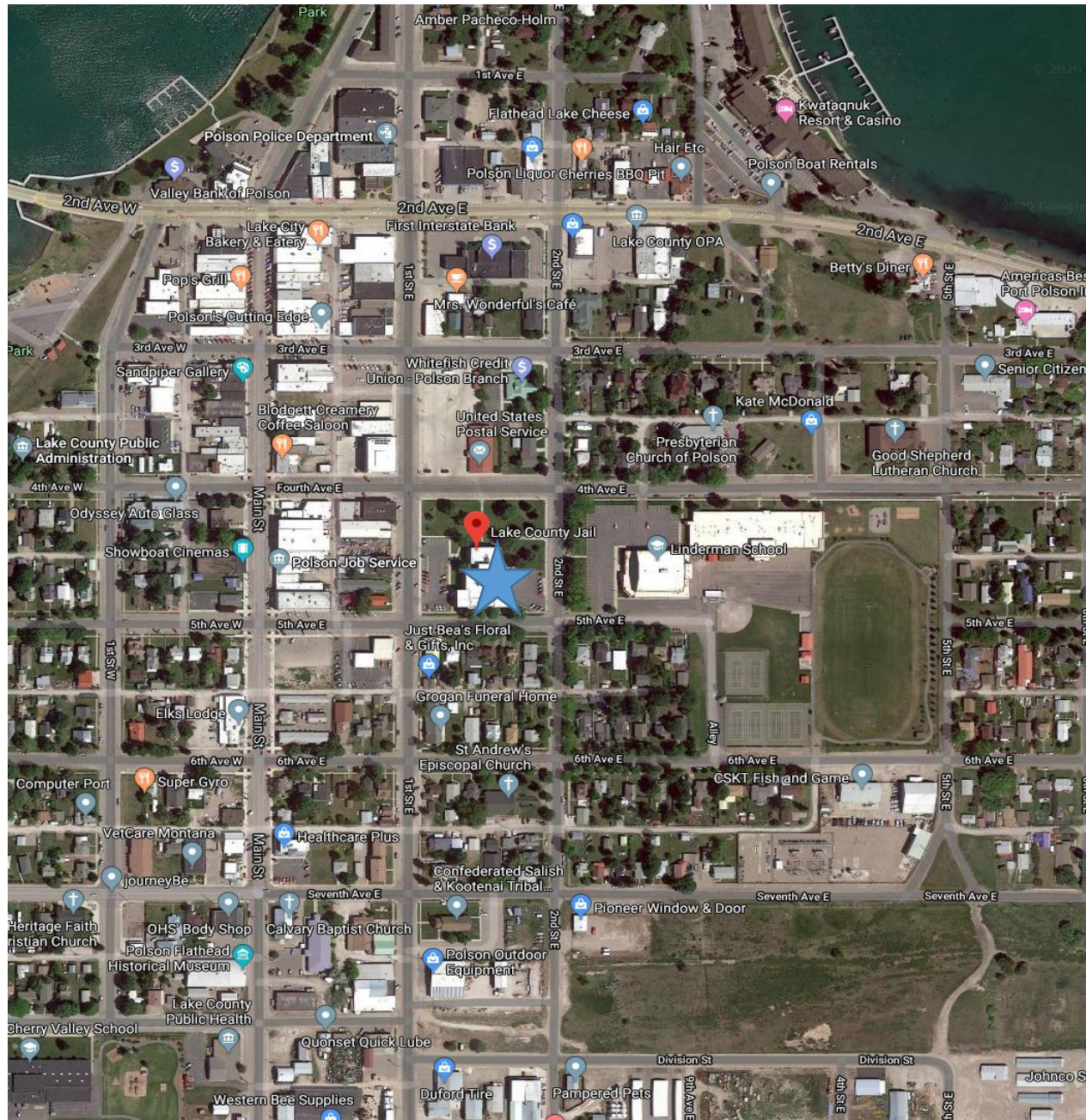
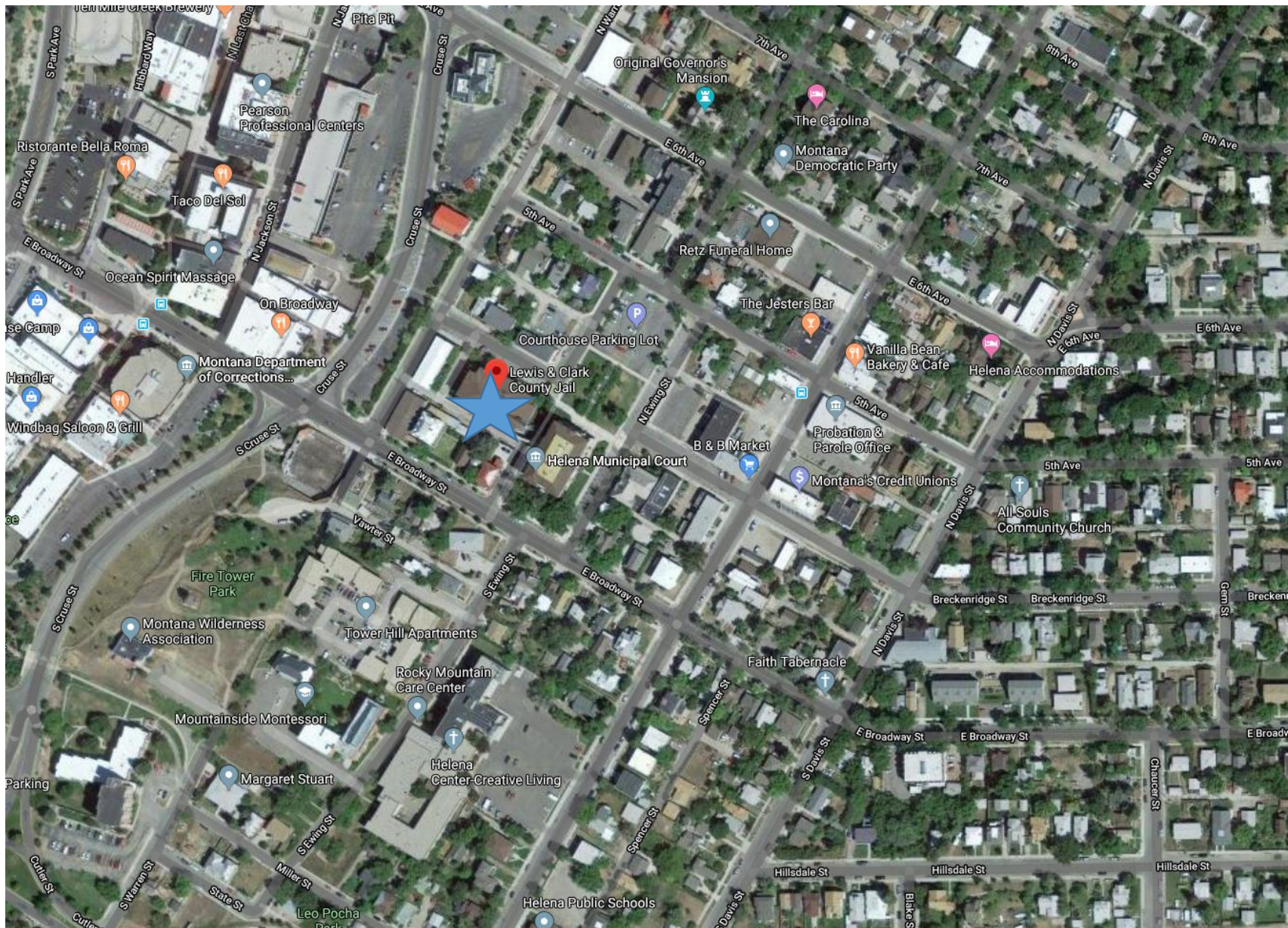


Lake County – Polson, MT



An aerial map of Livingston, Montana, with a red pin and a blue star marking the location of the Park County Sheriff's Office. The map shows a grid of streets including E Main St, E Lewis St, E Clark St, E Geyer St, and various alleys. Landmarks such as the Park County Human Services Office, St Marks Church Universal, Park County Environmental Council, First Baptist Church, and Eastside Elementary School are labeled. Other businesses like Pinky's Cafe, Pickle Barrel, and Novus Glass are also visible. The map is oriented with North at the top.

Lewis & Clark County – Helena, MT



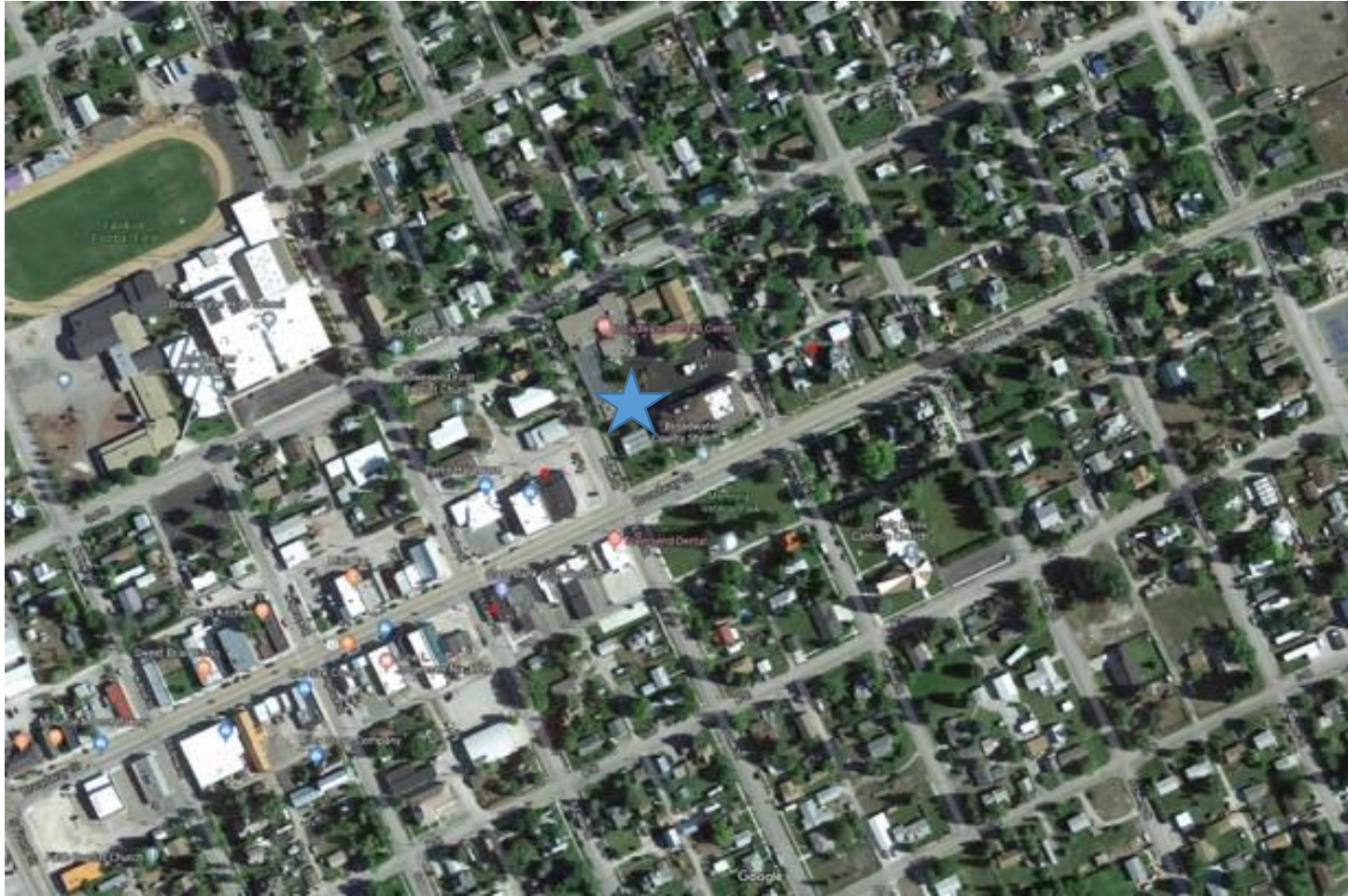
Jefferson County – Boulder, MT



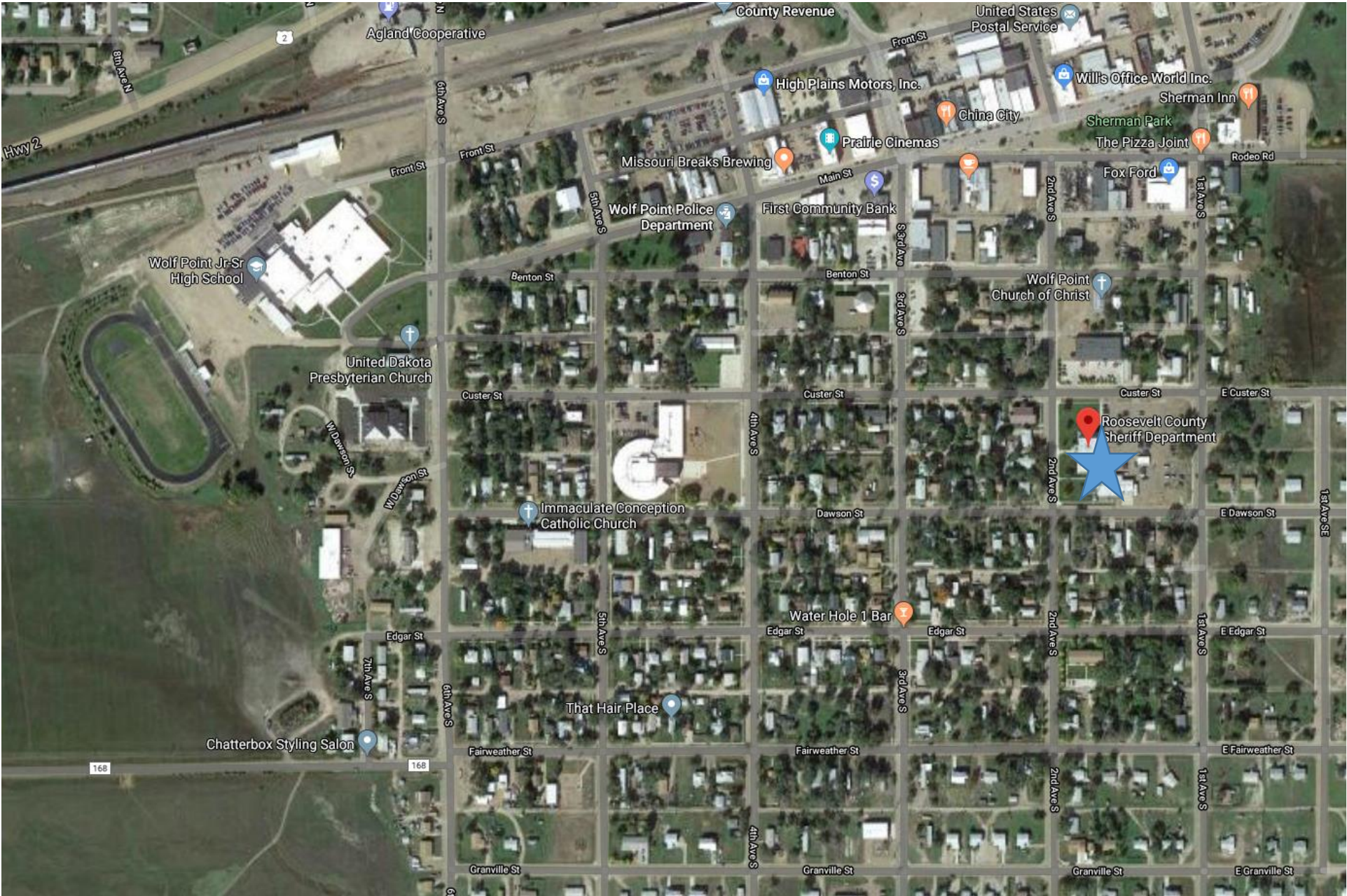
Chouteau County – Fort Benton, MT



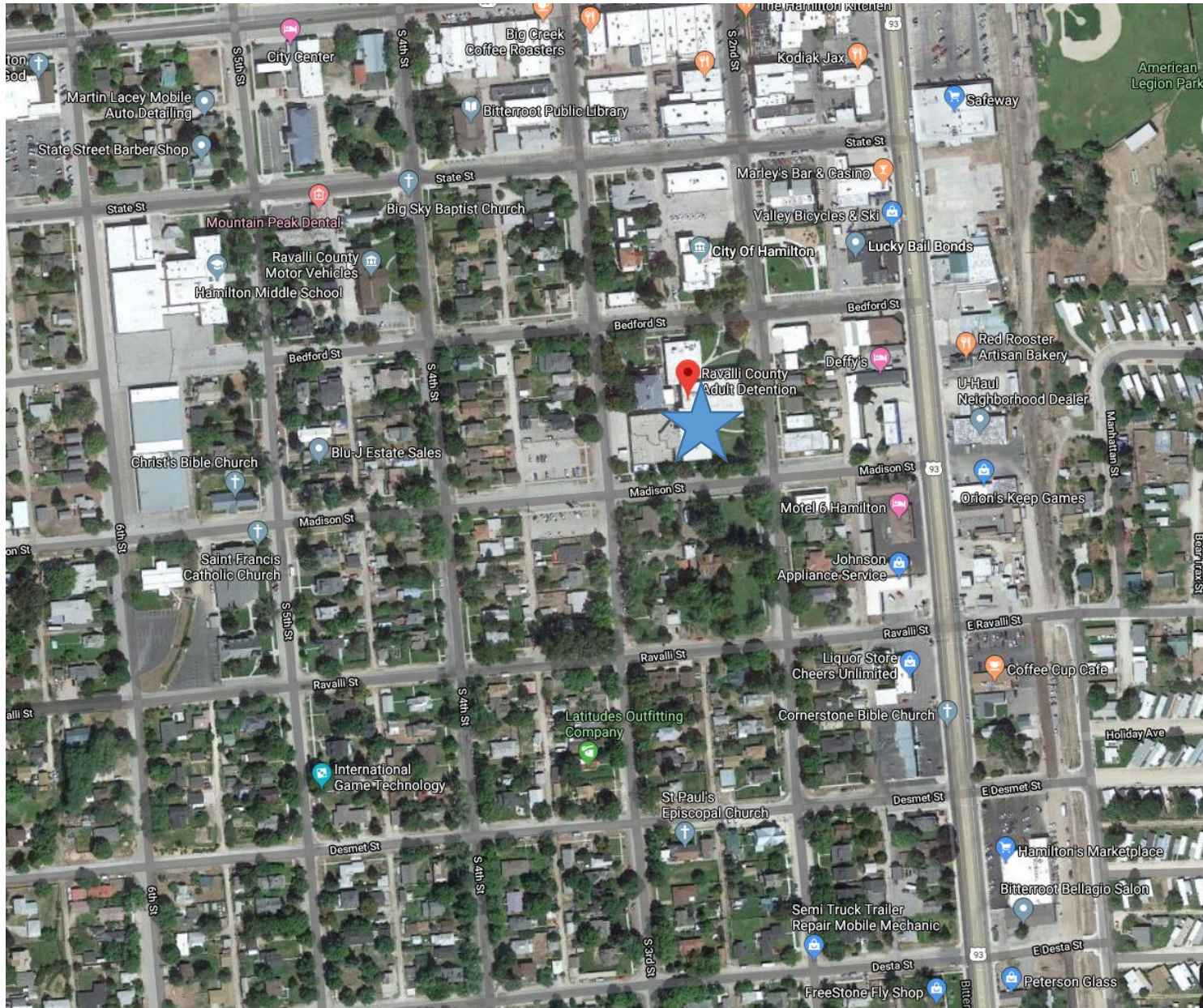
Broadwater County - Townsend, MT



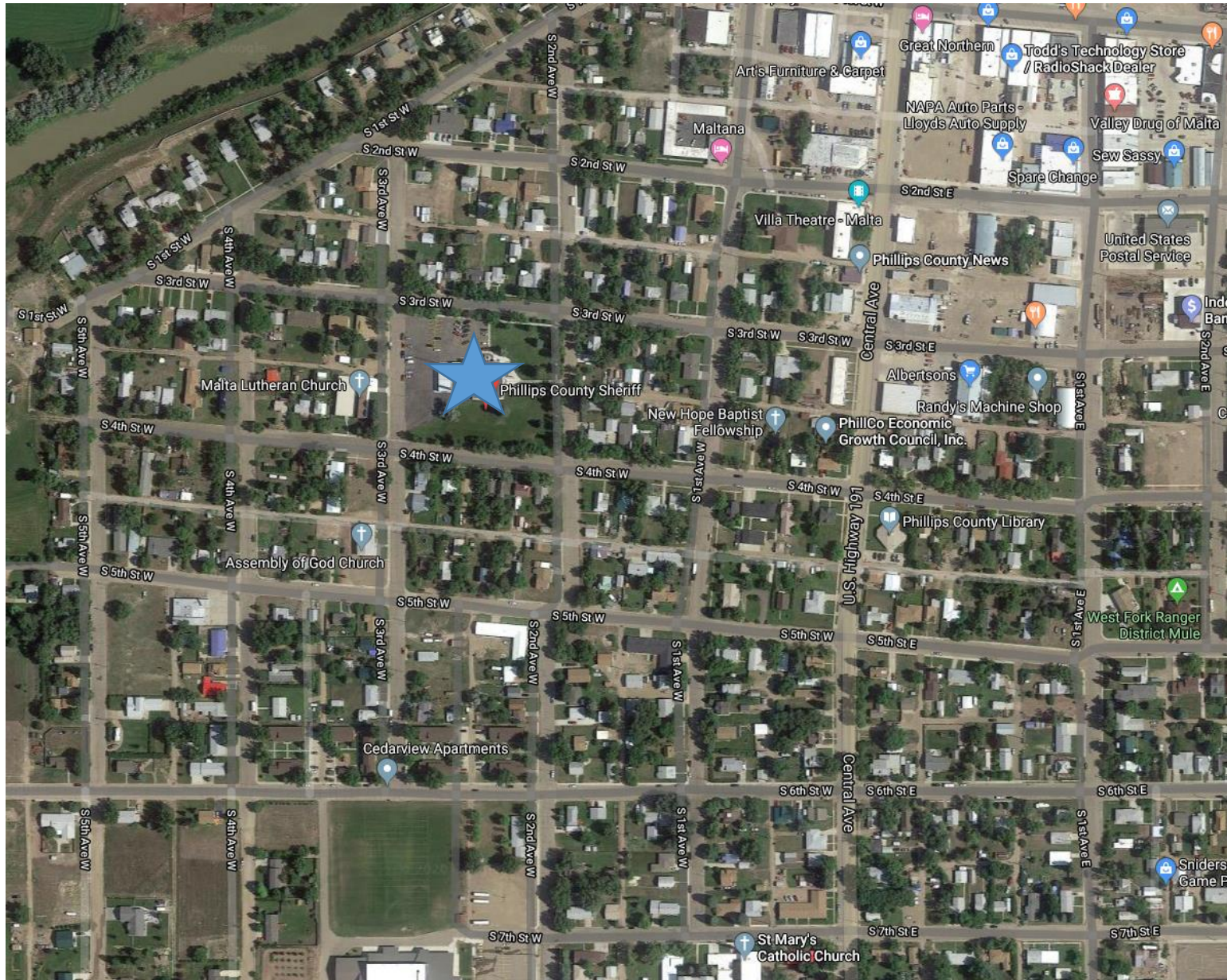
Roosevelt County – Wolf Point, MT



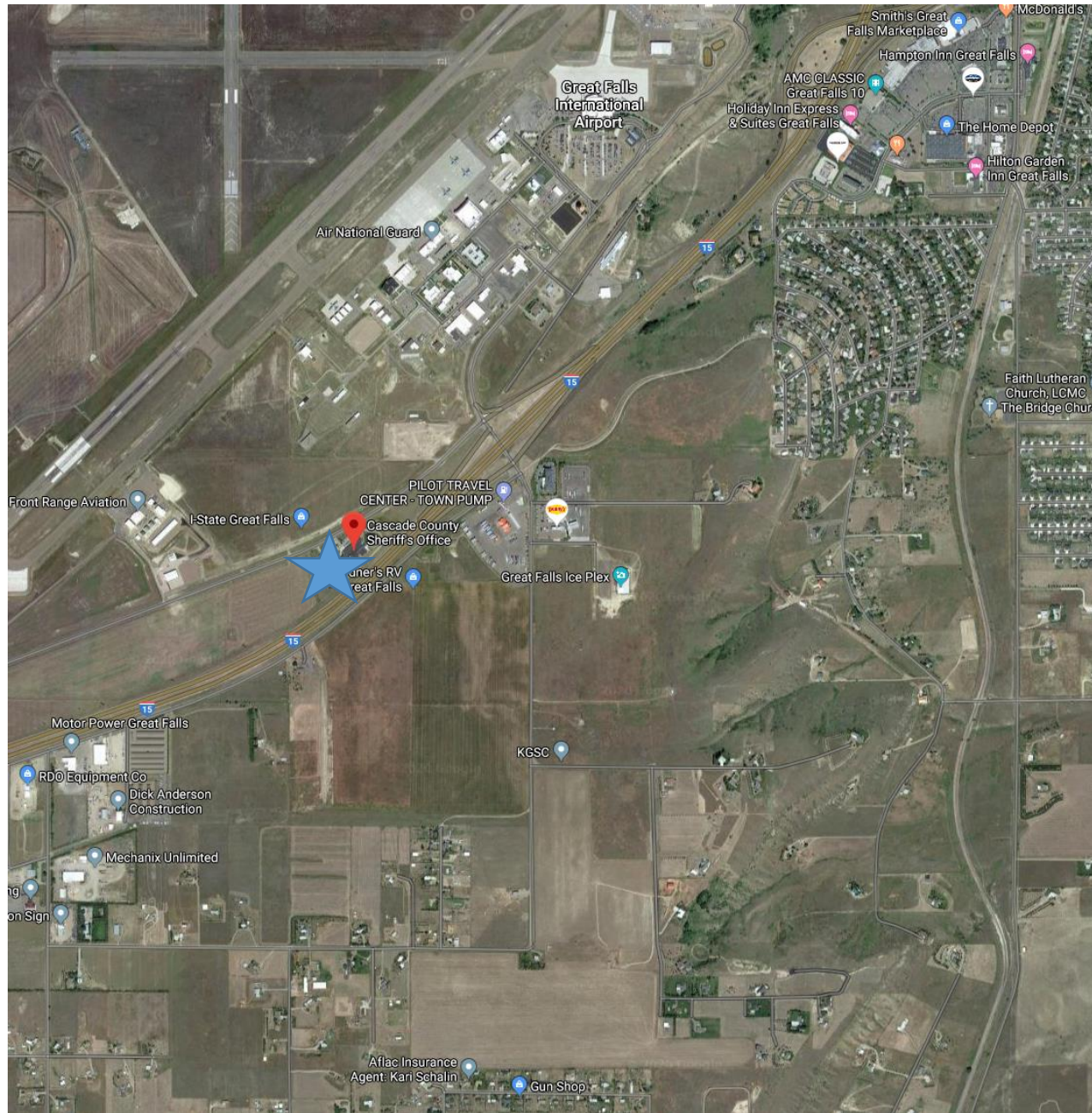
Ravalli County – Hamilton, MT



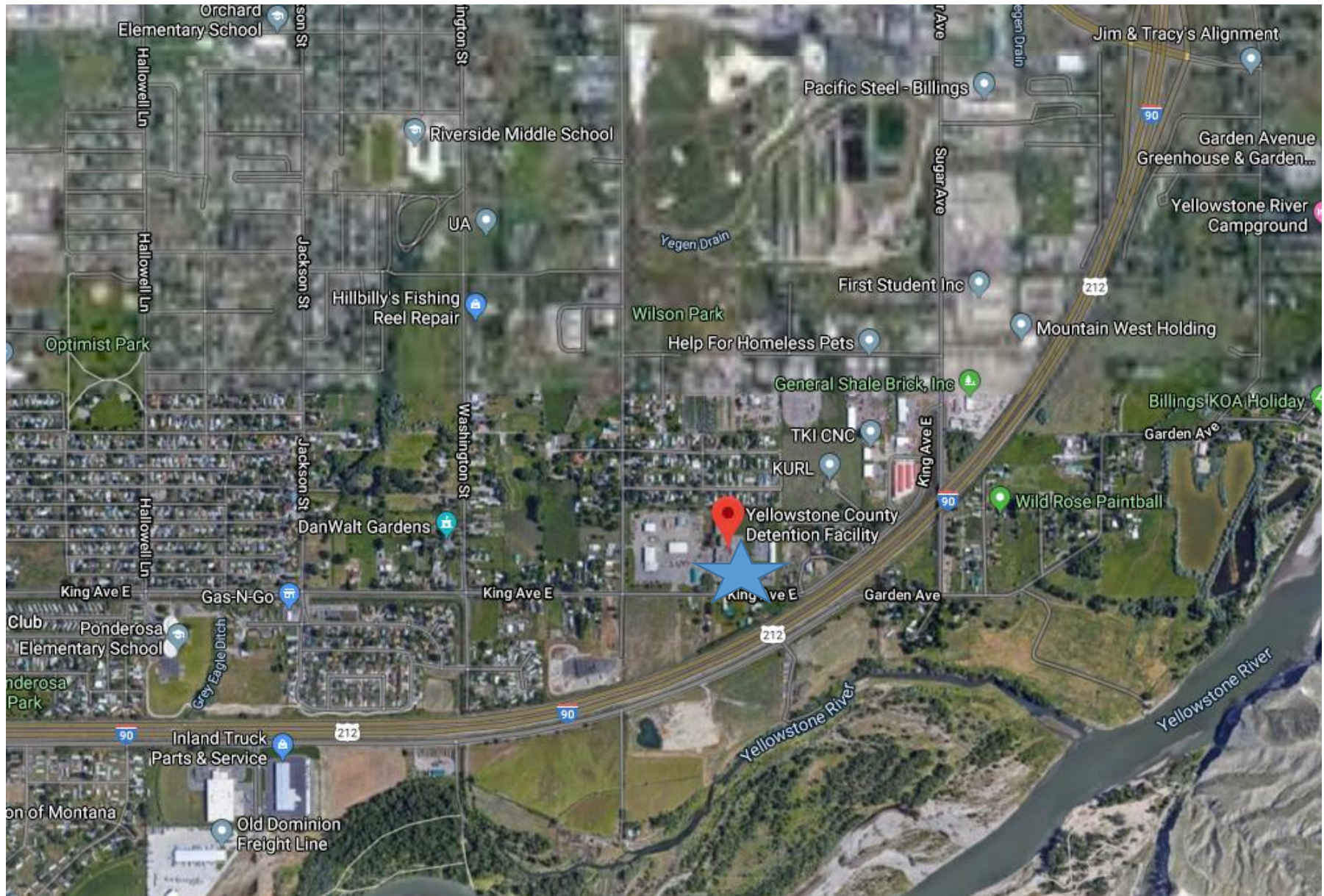
Phillips County – Malta, MT



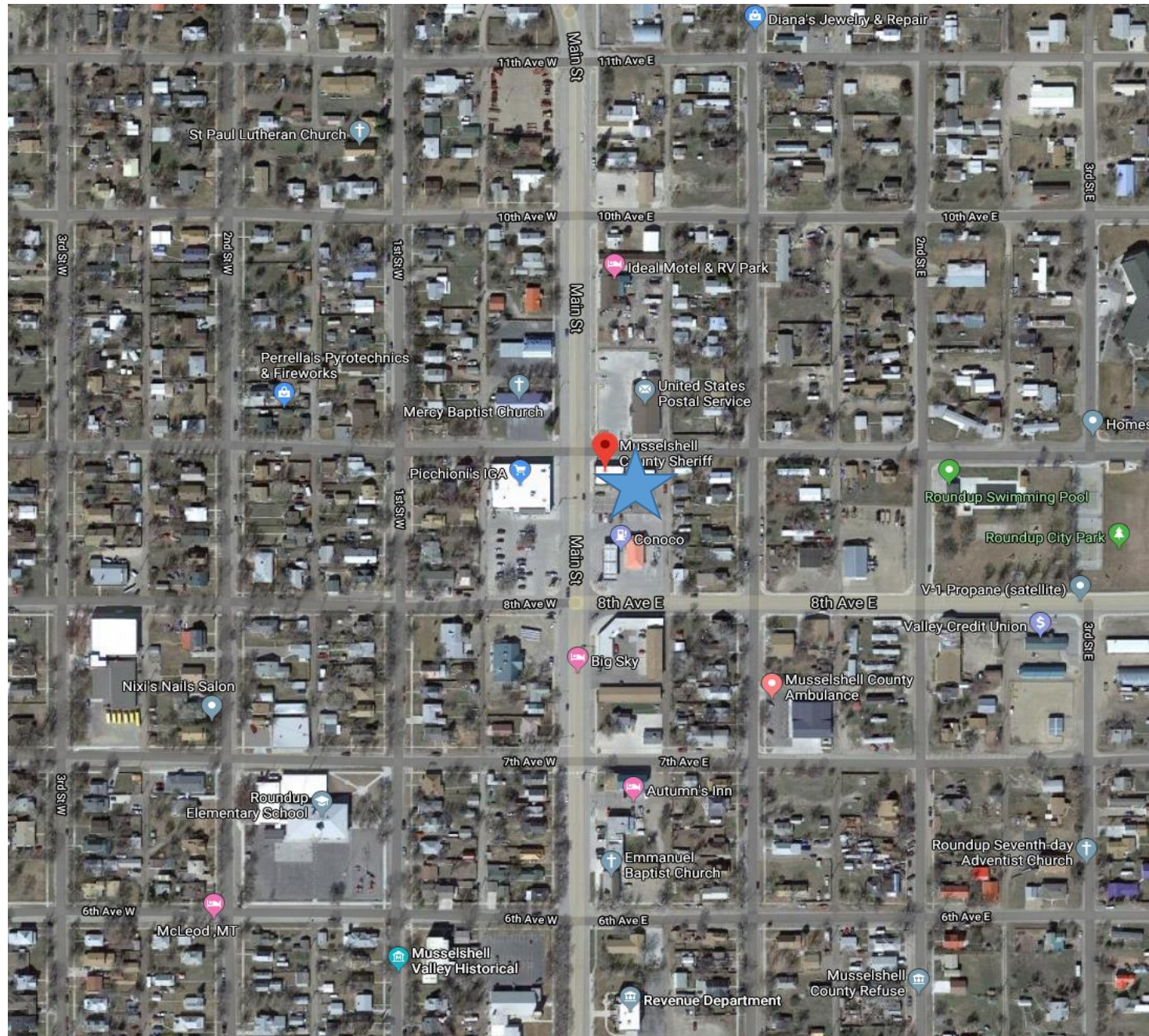
Cascade County – Great Falls, MT



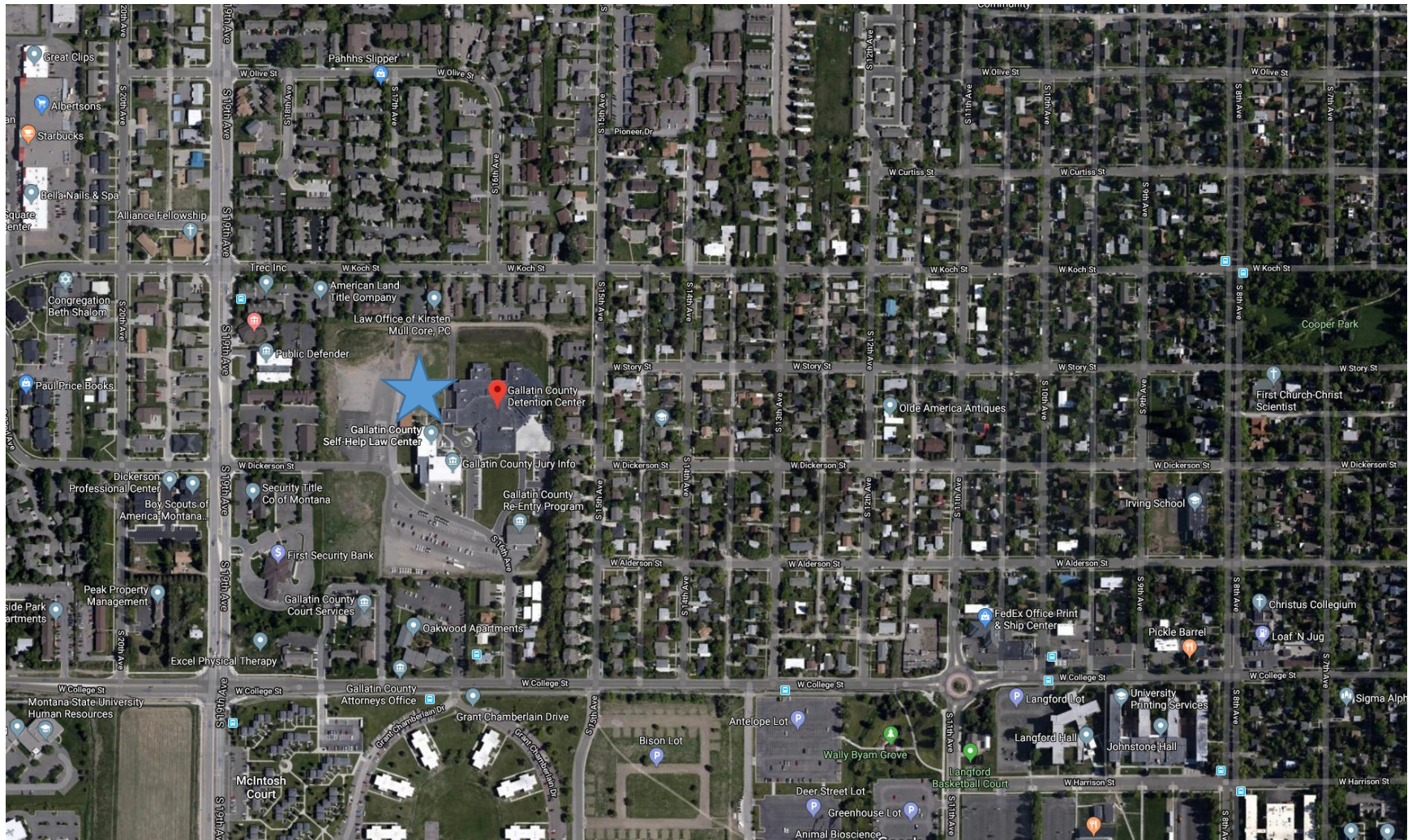
Yellowstone County – Billings, MT



Musselshell County – Roundup, MT



Gallatin County – Bozeman, MT



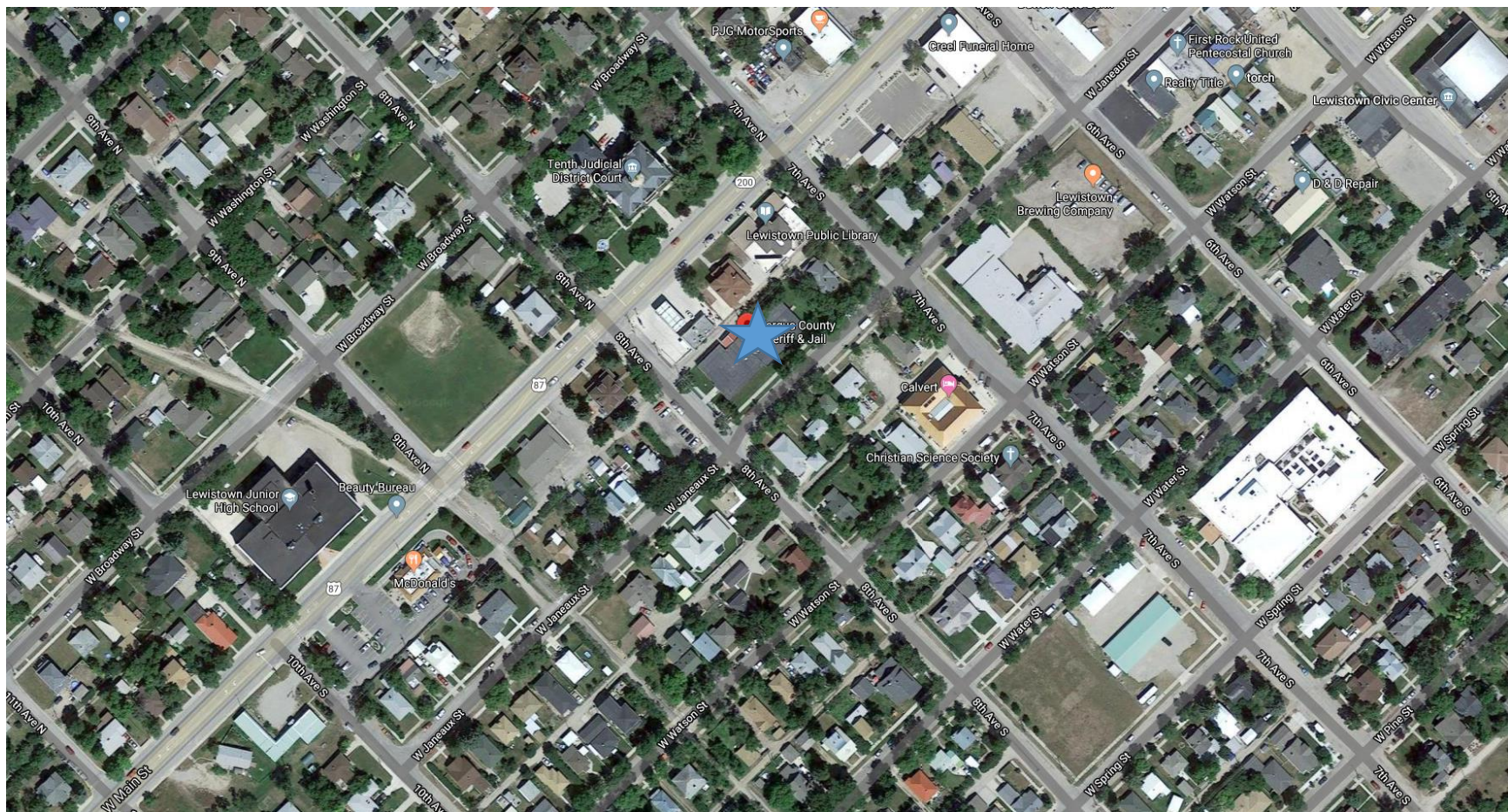
Custer County – Miles City, MT



Hill County – Havre, MT



Fergus County – Lewistown, MT



Rosebud County – Forsyth, MT



Valley County – Glasgow, MT



Toole County – Shelby, MT

